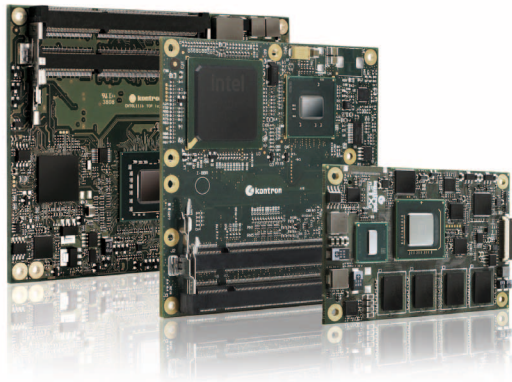
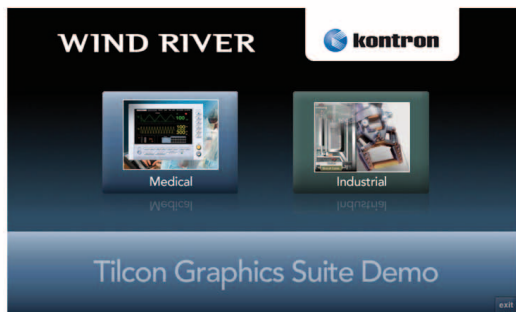


» Starterkits with VxWorks «



+



WIND RIVER

Preassembled Starterkits including Computer-on-Module and LiveUSB Evaluation

- » Get your application development started immediately
- » Fully assembled Starterkits for COM Express® Technology
- » Pre-assembled with COMs incl. Heatspreader and Memory
- » Equipment for Wind River LiveUSB Evaluation Environment

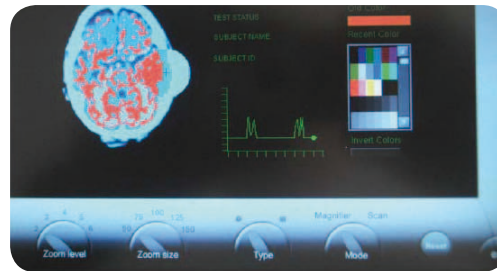
The COM Express® Starterkits VxWorks are equipped for express evaluation purposes. The VxWorks Starterkits are fully assembled with a COM incl. memory and Heatspreader. The nanoETXexpress version is assembled additionally with 2GB Flash onboard and a 7" Display with Touchscreen support.

Test-drive the Medical and Industrial graphical demonstrations, create your own VxWorks Image projects, downloadable Kernel Modules, Real Time Process Projects and Tilcon Graphics Applications while you read the step by step Evaluation Tutorial and watch the accompanying videos.

The VxWorks 6.8 and Tilcon Graphics Evaluation 5.7 environment is packaged on a self contained bootable Fedora 11 Live USB stick with the Wind River Workbench 3.2 Development Environment – a complete operating system. All you need is a Personal Computer and a separate display (except the nanoETXexpress version). No installation and long setup times are required. The self directed Evaluation Tutorials teaches how to develop device software, how to run

and debug VxWorks and applications directly on the COM. A fully operational Tilcon Interface Development Toolkit guides the user to create and simulate graphical application prototypes that are then downloaded and executed on the COM using the Tilcon Graphics Engine.

Exercise the evaluation by following the video tutorials, trying your own software or for example running benchmarks. The LiveUSB Evaluation will be delivered with a 30 days evaluation period for the Wind River Workbench 3.2.



Ordering Information

Article	Part-No.	Description
Fully assembled Starterkit (*1)		
The Kit is fully assembled with		
		WIND RIVER
		The 8GB Wind River LiveUSB environment stick with Fedora 11 includes a Wind River Workbench 3.2 with a 30 day evaluation period, the Wind River Tilcon Interface Development Tool 5.7 and VxWorks 6.8. The 2 GB USB stick contains a preinstalled bootable VxWorks 6.8 demo image with Wind River Tilcon Graphic demo applications.
nanoETXexpress-Starterkit VxWorks	34100-0000-00-SVxW	34100-0000-00-5 34001-5120-16-1 34001-0000-99-0C01 WIND RIVER
		COM Express® HMI Starterkit Type 1, 7" WVGA Panel with touchscreen support, additional cables (*2) incl. nanoETXexpress-SP 1,6GHz 512/2GB (Intel® Atom™ Z530 1,6 GHz and Intel® SCH US15W, 512MB DDR2 SDRAM, 2GB onboard Flash drive) incl. Heatsink-nanoETXexpress adapted version, only for nanoETXexpress-SP
microETXexpress®-SP Starterkit VxWorks	36100-0000-SP-SVxW	36100-0000-00-5 36003-0000-16-1 97011-1024-00-4 36003-0000-99-0 WIND RIVER
		COM Express® miniStarterkit Type 2 (*2) incl. microETXexpress®-SP 1,6GHz (Intel® Atom™ Z530 1,6 GHz and Intel® SCH US15W) incl. 1GB Memory incl. Heatspreader adapted version, only for microETXexpress®-SP
microETXexpress®-DC Starterkit VxWorks	36100-0000-DC-SVxW	36100-0000-00-5 36005-0000-16-2 97011-1024-00-4 36005-0000-99-0 WIND RIVER
		COM Express® miniStarterkit Type 2 (*2) incl. microETXexpress®-DC 1,6GHz (Intel® Atom™ N270 1,6 GHz and Intel® 945GSE and ICH7M chipset) incl. 1GB Memory incl. Heatspreader adapted version, only for microETXexpress®-DC
microETXexpress®-PC Starterkit VxWorks	36100-0000-PC-SVxW	36100-0000-00-5 36004-0000-12-2 97015-1024-10-0 36004-0000-99-0C02 WIND RIVER
		COM Express® miniStarterkit Type 2 (*2) incl. microETXexpress®-PC 1,2GHz (Intel® Core™ 2 Duo SU 9300 ULV) incl. 1GB DDR3 Memory incl. Heatsink adapted version, only for microETXexpress®-PC
ETXexpress®-PC Starterkit VxWorks	38100-0000-PC-SVxW	38100-0000-00-5 38008-0000-12-2 97015-1024-10-0 38008-0000-99-0C02 WIND RIVER
		COM Express miniStarterkit Type 2 (*2) incl. ETXexpress®-PC 1,2GHz (Intel® Core™ 2 Duo SU 9300 ULV) incl. 1GB DDR3 Memory incl. Heatsink adapted version, only for ETXexpress®-PC
(*) NOTE: 1. The VxWorks Starterkits are only available in the named configurations. 2. Please find detailed information about the standard Starterkits at the web and in the dedicated datasheets.		

CORPORATE OFFICES

Europe, Middle East & Africa

Oskar-von-Miller-Str. 1
85386 Eching/Munich
Germany
Tel.: +49 (0)8165/ 77 777
Fax: +49 (0)8165/ 77 279
info@kontron.com

North America

14118 Stowe Drive
Poway, CA 92064-7147
USA
Tel.: +1 888 294 4558
Fax: +1 858 677 0898
info@us.kontron.com

Asia Pacific

17 Building,Block #1,ABP.
188 Southern West 4th Ring Road
Beijing 100070, P.R.China
Tel.: + 86 10 63751188
Fax: + 86 10 83682438
info@kontron.cn



#Starterkits for VX Works# 03232011PPL
All data is for information purposes only and not guaranteed for legal purposes. Subject to change without notice. Information in this datasheet has been carefully checked and is believed to be accurate; however, no responsibility is assumed for inaccuracies. All brand or product names are trademarks or registered trademarks of their respective owners. PTCMG and the PTCMG logo and COM Express® and the COM Express® logo are registered trademarks of the PCI Industrial Computer Manufacturers Group.