

kontron

The Power of IoT

Kontron AIS GmbH



FabEagle[®] Monitoring

Factory-Wide Shop Floor Management for More Transparency in Production

FabEagle[®] Monitoring provides factory-wide shop floor management with a monitoring system and live data collection for factory visualization to cover your operating data and machine data acquisition requirements. It focuses on monitoring and reporting machine states, alarms, quantities, maintenance, and visualizing them in configurable dashboards.

As a scalable recording and evaluation system, it is versatile in the way it can be applied to all areas of production. This gives you a comprehensive overview of your production and maintenance efficiency at any time.

Your benefits

- › Increasing machine utilization through systematic data preparation and evaluation
- › Improve team and shift collaboration through transparent evaluation of KPIs
- › Shorter downtimes thanks to effective maintenance management



Features



Dashboard

- › Flexible assignment and configuration of modules for KPIs, functions and notifications
- › Frequently used functions, links, lists, notes, and evaluations at a glance



EquipmentHub

- › Management of machine and equipment master data
- › Provision of machine documentation and journal entries



Monitoring

- › Systematic monitoring and evaluation of alarms, conditions, process values and malfunctions
- › Identification and overview of production-related KPIs



eDocs

- › View, retrieve, and download documents
- › Integrated access and approval management



KnowledgeBase

- › Document, link, evaluate and comment on best practice solutions
- › Easy search and filtering by individual topics



OpenIssues

- › Intuitive creation and management of internal service tickets
- › Transparent cause research and follow-up of processing



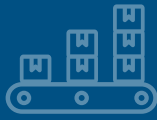
Workflows

- › Preparation and processing of checklists for tests, workflows, and maintenance
- › Planning and managing complex workflows in multiple phases



SoftwareCenter

- › Version management of the machine software
- › Organization of software versions and updates



Boosting productivity and availability

Compare your machines and systems in terms of utilization, dependencies and states and discover untapped potential even across multiple sites.



Increasing transparency

Ensure rapid exchange of information between teams, efficient management of machines and immediate response in the event of a malfunction with seamless recording and visualization of your specific KPIs.



Optimizing maintenance management

Thanks to mobile task scheduling and documentation of maintenance and servicing, you have complete control over your maintenance management at all times, across all shifts and machines.

© shutterstock.com/Jason Wright

Our integration capabilities

As a full-service provider, we handle all machine integration tasks, e.g. interface specification, software qualification, on-site testing, integration of systems into your production set-up.

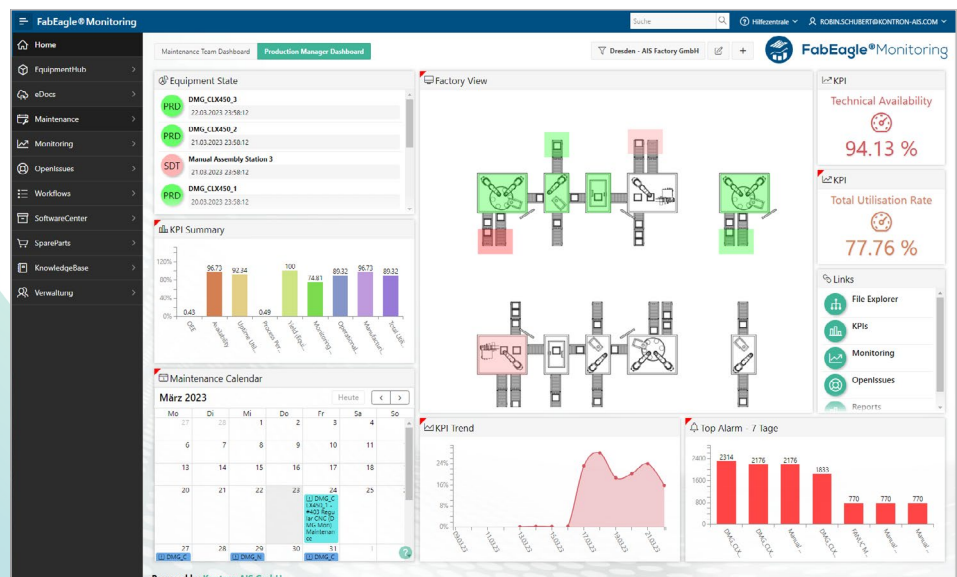


Maintenance

- › Intuitive maintenance calendar with automatic notification function
- › Cyclical, alarm, condition-based or process value-based operational planning
- › Maintenance planning for predictive maintenance either by number of operating hours or type of use

Our services

In addition to standardized industrial software solutions, we provide you with a wide range of know-how and application-specific services for all phases of your project. With more than 30 years of experience in successfully implemented automation projects, we support you in planning and optimizing your digitalized production.



Kontron AIS GmbH

Kontron AIS GmbH sets the benchmark in industrial software – for more than 30 years and with an experienced team of over 250 employees. The proven software products and customized digitalization solutions enable machine and equipment builders as well as factory operators to break new ground in automation and secure long-term competitive advantages. Together with its customers, Kontron AIS implements worldwide cross-industry, intelligent digitalization strategies and solutions for the smart manufacturing of tomorrow.

As a subsidiary of the Kontron AG, Kontron AIS offers integrated, end-to-end IoT concepts consisting of hardware and software as well as worldwide project management, service, and support thanks to a global network.



Software Development



Consulting and Requirement Engineering



Project Management and Training



Supply of Hardware for Control and IT Systems



On-Site Installation and Commissioning



Flexible, Global Service and Support

Kontron AIS GmbH
Otto-Mohr-Straße 6
01237 Dresden
Germany

Phone +49 (0)351 2166 0
Fax +49 (0)351 2166 3000

We are at your service:
contact@kontron-ais.com

More information:
www.kontron-ais.com

THE BENCHMARK IN INDUSTRIAL SOFTWARE