

Kontron Electronics GmbH

Max-Planck-Straße 6
72636 Frickenhausen
Germany

Tel.: +49 7022 4057-0
sales@kontron-electronics.de

www.kontron-electronics.com

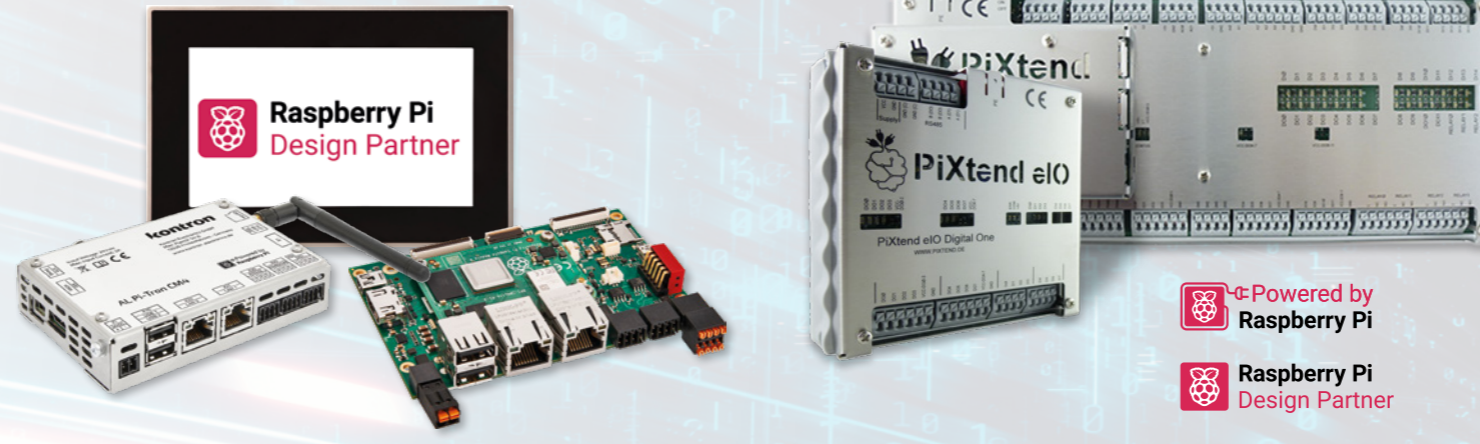
**Global Headquarters
Kontron Europe GmbH**

Gutenbergstraße 2
85737 Ismaning
Germany

Tel.: +49 821 4086-0
info@kontron.com

www.kontron.com

We point out that all used brand names refer to the general brand, trademark or patent protection of the respective company or facility. Subject to change.



We IoT-ize
your Business

Pi-Tron based on Raspberry Pi

– Solution for Industrial Products

As Raspberry Pi Design Partner we support you with our expertise in the development of new Raspberry Pi product designs.

- › State of the art computing power
- › Industrial-use interfaces, customizable
- › WLAN/Bluetooth® connectivity
- › Residential and industrial applications

BL Pi-Tron CM4

- › 4x Arm® Cortex®-A72 @1.5 GHz
- › 1 GB RAM up to 8 GB LPDDR4-RAM
- › Optional WLAN/Bluetooth®
- › Suitable for CODESYS® SoftPLC
- › Available until 2034

BL Pi-Tron CM3+

- › 4x Arm® Cortex®-A53 @1.2 GHz
- › 1 GB RAM, up to 32 GB eMMC
- › Fanless operation
- › Suitable for CODESYS® SoftPLC
- › Available until 2030

AL Pi-Tron CM4

- › 2x USB 2.0 Host, 2x LAN, RS232, RS485, CAN FD, 4x DIO
- › Stainless steel housing
- › 111 x 25 x 76 mm for mounting on 35 mm mounting rail

AL Pi-Tron CM3+

- › 2x USB 2.0 Host, 2x LAN, RS232, RS485, CAN, 4x DIO
- › Stainless steel housing
- › 111 x 25 x 76 mm for mounting on 35 mm mounting rail

DL 7" Pi-Tron CM4

- › Broadcom BCM2711, 4x Arm® Cortex®-A72 @1.5 GHz
- › 3D Video Engine
- › 7" IPS-Display, 1024 x 600 Pixel 450 cd/m²
- › Aluminium Front, PCAP Multitouch

PiXtend®

– First choice for Industrial Projects

- › PiXtend® controllers and PiXtend® eIO modules reduce your time-to-market
- › Based on a single-board computer from the Raspberry Pi Foundation Pi4 or 3B+
- › Programmable in common programming languages such as C or Python
- › Suitable for CODESYS® SoftPLC

PiXtend® V2-L- Pi 4 & PiXtend® V2-L-

- › Brushed stainless steel DIN rail housing
- › 16x DI, 12x DO, 6x AI, 2x AO, 4x Relais, 6x PWM, 4x GPIO
- › Retain memory 64 Byte Flash EEPROM
- › Suitable for CODESYS® SoftPLC

PiXtend® V2-S- Pi 4 & PiXtend® V2-S-

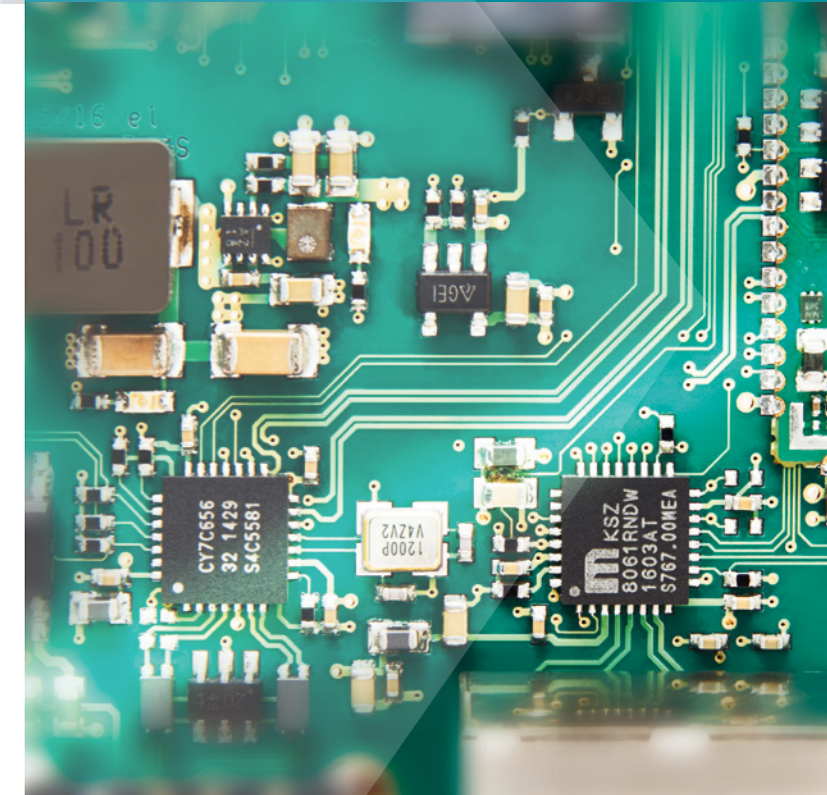
- › Brushed stainless steel DIN rail housing
- › 8x DI, 4x DO, 2x AI, 2x AO, 4x Relais, 4x PWM, 4x GPIO
- › Retain memory 32 Byte Flash EEPROM
- › Suitable for CODESYS® SoftPLC

PiXtend® eIO Digital One Pro

- › 8x 3.3 / 5 / 12 / 24 V, digital input including counter function
- › 8x 0,5 A, 5 / 12 / 24 V, digital output
- › Fast digital logic "HyperLogic"

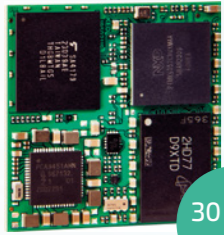
PiXtend® eIO Analog One Pro

- › 4x 0...5 V / 0...10 V, analog 10-Bit voltage inputs (AI-U)
- › 4x 0...10 V, analog 12-Bit voltage outputs (AO-U)
- › 2x 0...20 mA, analog 12-Bit current outputs (AO-I)
- › 4x 0...20 mA, analog 10-Bit current inputs (AI-I)



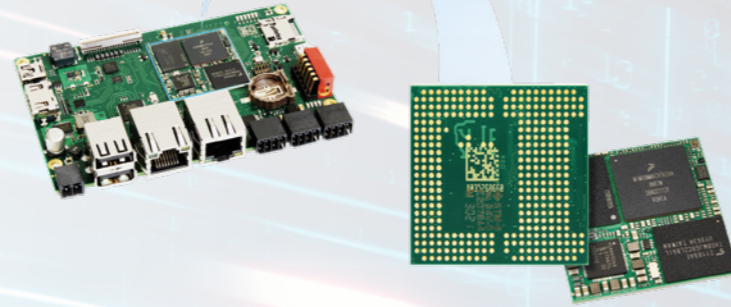
System-on-Module

– OSM-S Family



30 x 30 mm

- › Directly soldered without plug connectors
- › Fully automated assembly and test
- › Manufacturer independent
- › Future proof open standard



Automation-Line

– Proven & Robust



- › CODESYS® ready
- › Flexible interfaces
- › Easy adaptation to customer-specific requirements
- › Compact, fanless all-in-one solution

Secure & Connected

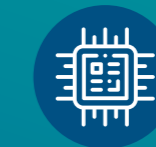


Electronics²

Development

– Your Ideas are our Motivation

From the idea to the development of a product ready for the market – our team is there to support you. Many years of development experience and know-how guarantee your success.



Hardware



Software



Mechanics



Product Industrialization

Production

– We are your Partner

As an experienced electronics services provider, we do far more than just production and assembly.



Manufacturing Expertise



Test & Quality



Certification



Final Assembly



Services

OSM-S i.MX8M Plus

- › 4x Arm® Cortex®-A53, M7, GPU and NPU
- › 2x 1 Gbit/s (1x with TSN), 2x USB 3.0, 2x CAN FD
- › MIPI DSI, LVDS, HDMI, 2x MIPI CSI
- › CODESYS® SoftPLC support

OSM-S i.MX8M Mini

- › 4x Arm® Cortex®-A53, M4, GPU
- › 1x 1 Gbit/s
- › MIPI DSI, 1x MIPI CSI
- › CODESYS® SoftPLC support

OSM-S i.MX93

- › 2x Arm® Cortex®-A55, M33, microNPU
- › 2x 1 Gbit/s (1x with TSN), 2x USB 2.0 OTG, 2x CAN FD
- › MIDI DSI, LVDS, 1x MIPI CSI

System-on-Module

– Powerful & Compact

- › Short development cycle
- › Reduced engineering risks
- › EMC tested
- › Long-term availability of CPU module



25 x 25 mm

SL i.MX6 ULL/UL

- › i.MX6 ULL 1x Arm® Cortex®-A7 @800 MHz
- › i.MX6 UltraLite 1x Arm® Cortex®-A7 @528 MHz
- › 2x 10/100 Mbit/s, 1x PHY included, 2x CAN 2.0 B
- › CODESYS® SoftPLC support

SL STM32 MP157

- › 2x Arm® Cortex®-A7
- › 1x Arm® Cortex®-M4 @200 MHz
- › 1x 10/100 Mbit/s, 1x PHY included, 1x CAN FD
- › MIPI DSI, RGB 24 Bit

CPU-Boards

– Efficient & Independent Platform

- › Reduced development effort
- › Fast time to market
- › Scalable computing power
- › Industrial connectors/ 24 V DC Input
- › Wide range of applications

BL i.MX8M Plus

- › 1 – 4 GB RAM, 8 – 64 GB eMMC, microSD-Card Slot
- › 2x USB 2.0, 2x GBE, RS232, RS485, CAN, 4x DIO
- › HDMI, LVDS, CSI, I²C/USB Touch
- › Suitable for CODESYS® SoftPLC

BL i.MX8M Mini

- › 1 – 4 GB RAM, 8 – 64 GB eMMC, microSD-Card Slot
- › 2x USB 2.0 Host, 1x Gbit/s, 1x 10/100 Mbit/s, RS232, RS485, CAN, 4x DIO
- › HDMI, LVDS, I²C/USB Touch
- › Suitable for CODESYS® SoftPLC

BL i.MX6 ULL

- › 512 MB RAM, 512 MB NAND, 4 GB eMMC, microSD-Card Slot
- › 2x USB 2.0 Host, 2x 10/100 Mbit/s, RS232, RS485, CAN, 2x DIO, 2x AIN
- › RGB, I²C/USB Touch
- › Suitable for CODESYS® SoftPLC

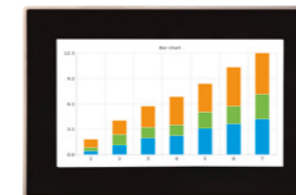
BL STM32 MP157

- › 512 MB RAM, 512 MB NAND, 4 GB eMMC, microSD-Card Slot
- › 2x USB 2.0 Host, 2x 10/100 Mbit/s, RS232, RS485, CAN FD, 2x DIO, 2x AIN
- › HDMI, LVDS, RGB, I²C/USB Touch

The SoM in combination with the Linux BSP and a complete development environment, offers an immediately deployable system which can be used for various applications. Develop your own baseboard based on the SoM module. Gladly we develop the baseboard together with you or take over the complete development process.

Display-Line

– Multitouch Panel



DL 7" i.MX8M Mini

- › 4x Arm® Cortex®-A53, Cortex®-M4
- › 1 – 4 GB RAM, 8 – 64 GB eMMC, microSD-Card Slot
- › 7" IPS-Display, 1024 x 600 Pixel, 450 cd/m²
- › Aluminium Front, PCAP Multitouch

- › High-quality visualization
- › Scalable from low-power to high-performance
- › Various customization options
- › Long-term availability

DL i.MX6 ULL

- › i.MX6 ULL 1x Arm® Cortex®-A7 @800 MHz
- › 512 MB RAM, 512 MB NAND, 4 GB eMMC, microSD-Card Slot
- › Glass front, frameless IP65, 5" TFT-Display
- › PCAP Multitouch

